

Information about Sanden Communication Plaza

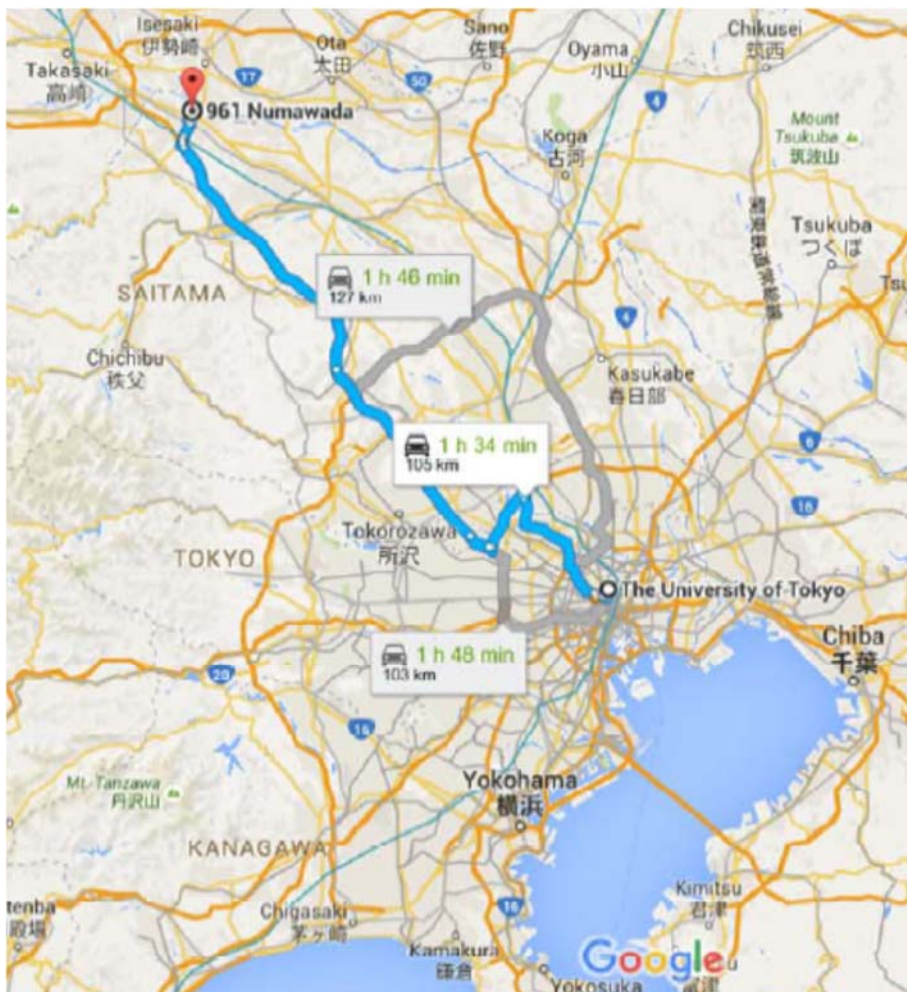


Address : 961 Numawada, Honjo-shi, Saitama, Japan

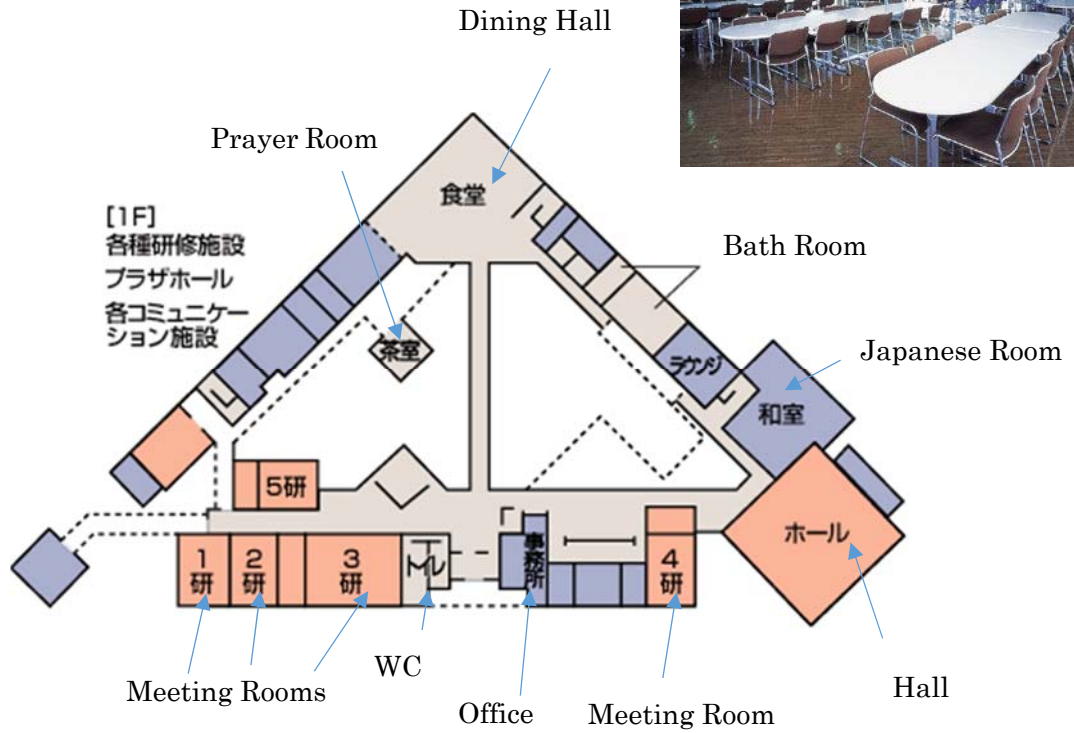
Tel : +81-495-23-1211

It is a facility of a company SANEN HOLDINGS CORPORATION.

<http://www.sanden.co.jp/english/index.html>



<1F>



Common Bath Rooms

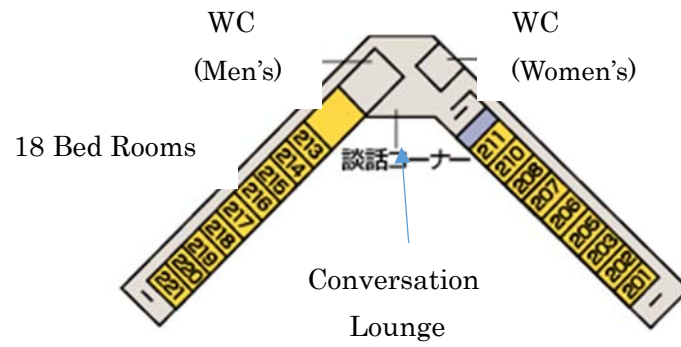
Open: 18:30-23:30

Available : body wash, two-in-one shampoo, hair dryer

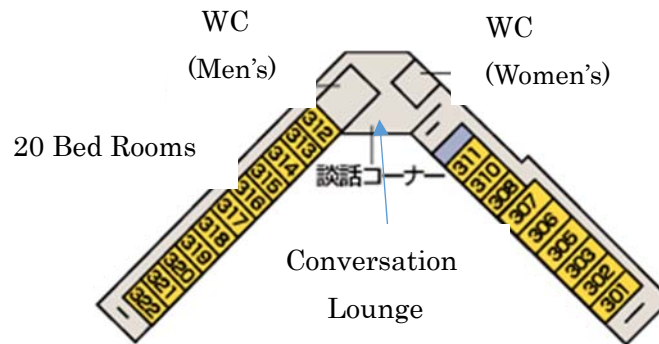
(You can buy teeth brushes, razors, Kleenex at the office)



<2F>



<3F>



Bed Room (Twin)

-Available : face towel, bath towel, yukata (you can not take it home)

*No bathroom/WC in the room

*No smoking

*No food or drink



Conversation Lounge


-Available : vending machine (soft drink, beer, snacks)



*Smoking lounge

Wifi

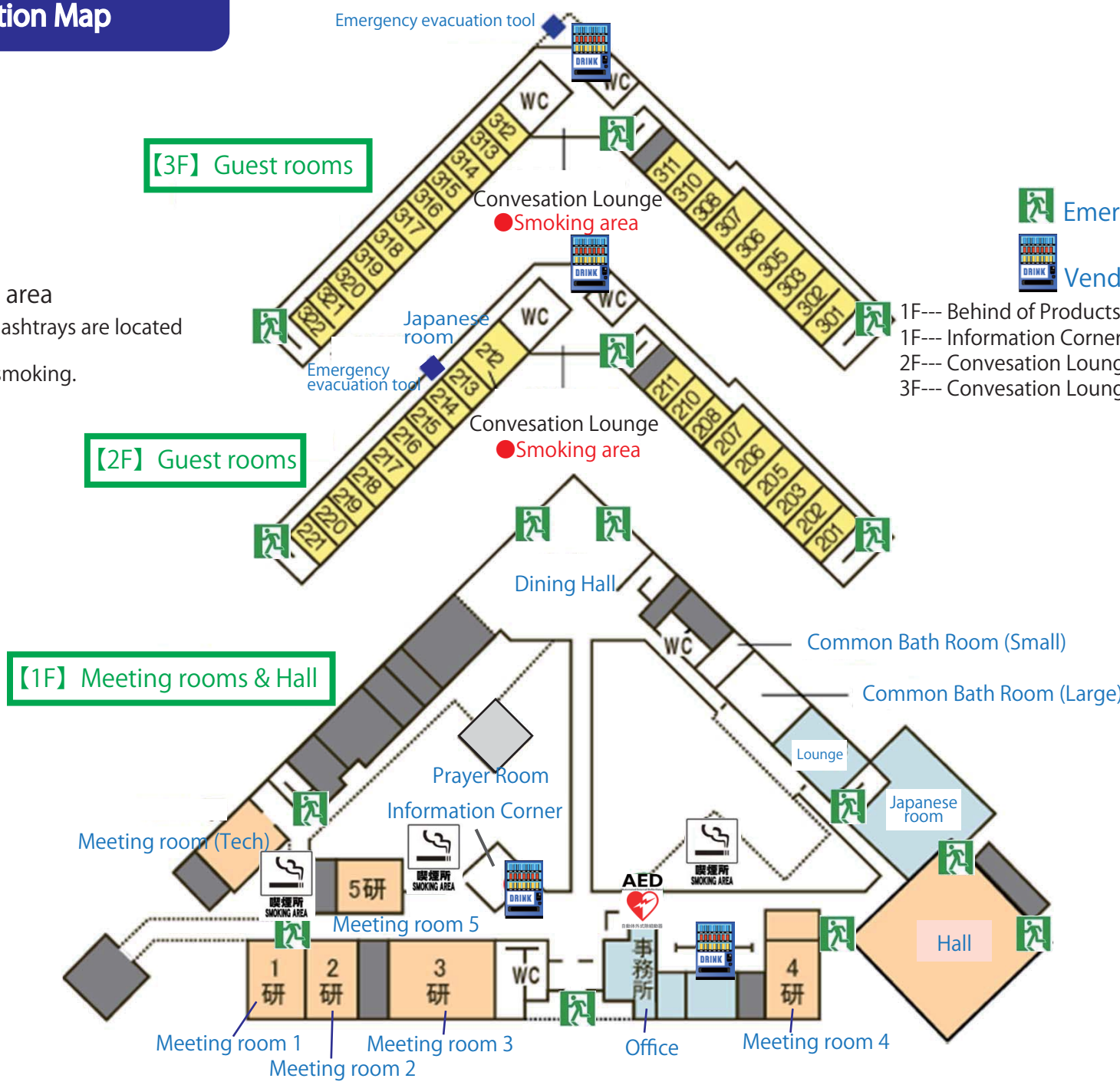
Available in the bed rooms, the hall, the dining room and the meeting rooms.

Sanden Communication Plaza Information Map

-  Smoking area
- Around the pond where ashtrays are located
- Convesation Lounge
- ※All guest rooms are non-smoking.

-  Emergency exit
-  Vending machine

- 1F--- Behind of Products Exhibition Corner (Soft drinks)
- 1F--- Information Corner (Coffee & snacks)
- 2F--- Convesation Lounge (Alcoholic drinks)
- 3F--- Convesation Lounge (Instant noodles)



【3F】 Guest rooms

【2F】 Guest rooms

【1F】 Meeting rooms & Hall