

# Route from Narita(成田)/Haneda(羽田) airport to Izu-Kogen station

Narita 成田      Tokyo 東京      Haneda 羽田      Shinagawa 品川      Atami 熱海      Ito 伊東      Izu-Kogen 伊豆高原





Room Western style



Room Japanese style

Restaurant Sakura 桜



Lounge



BAR

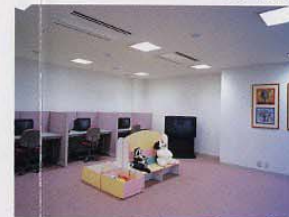
Bath room



Pool



Play land

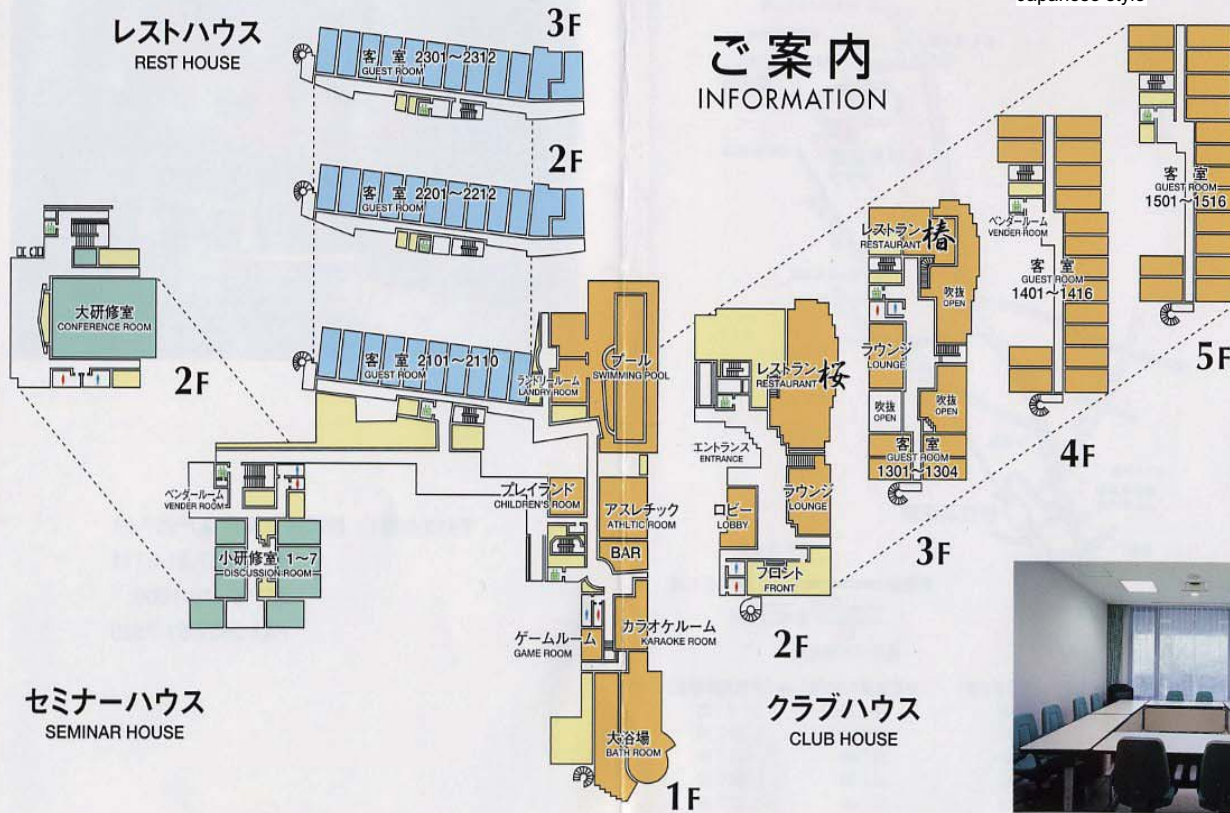


Discussion room

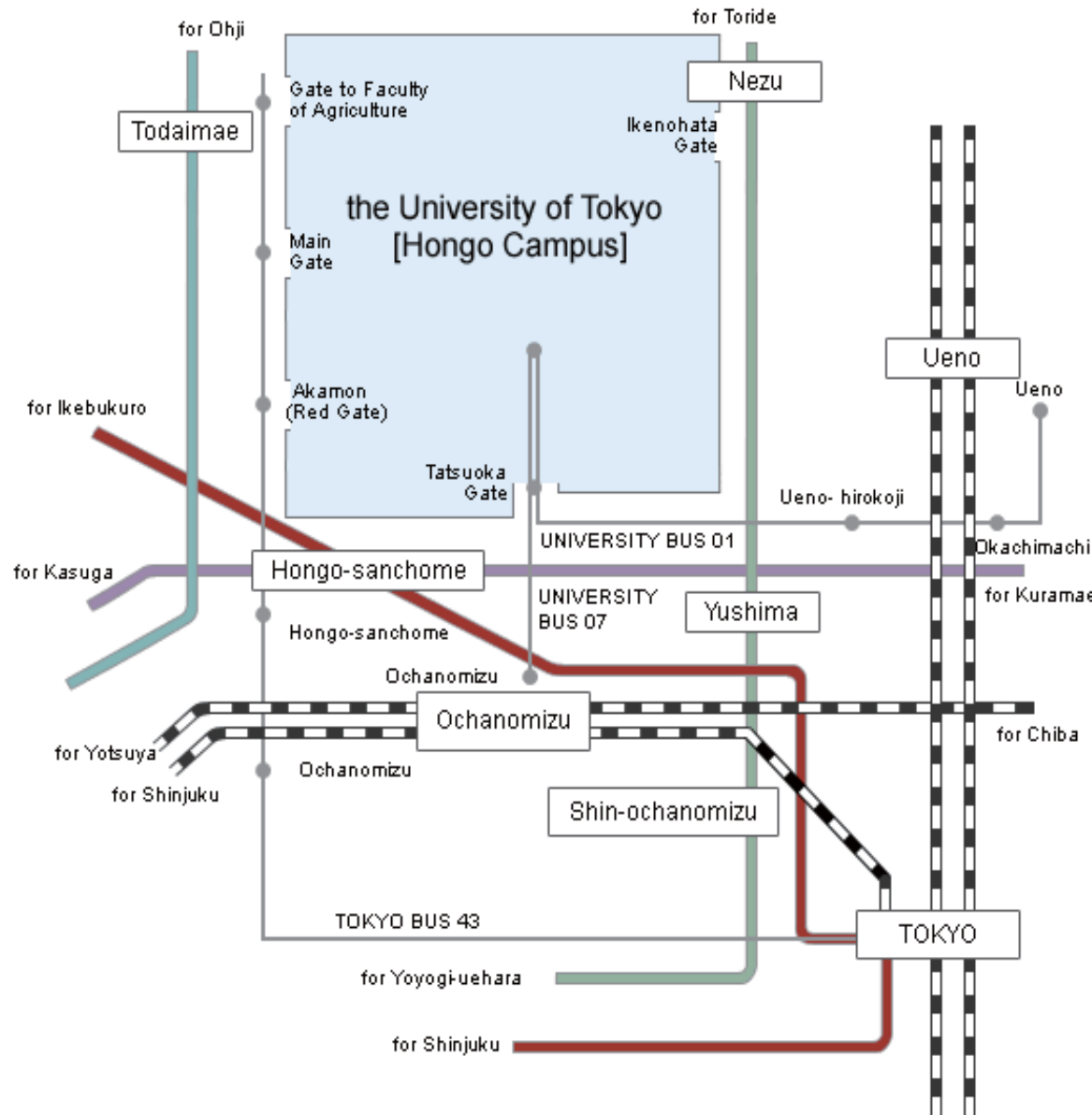


Conference room

ご案内  
INFORMATION

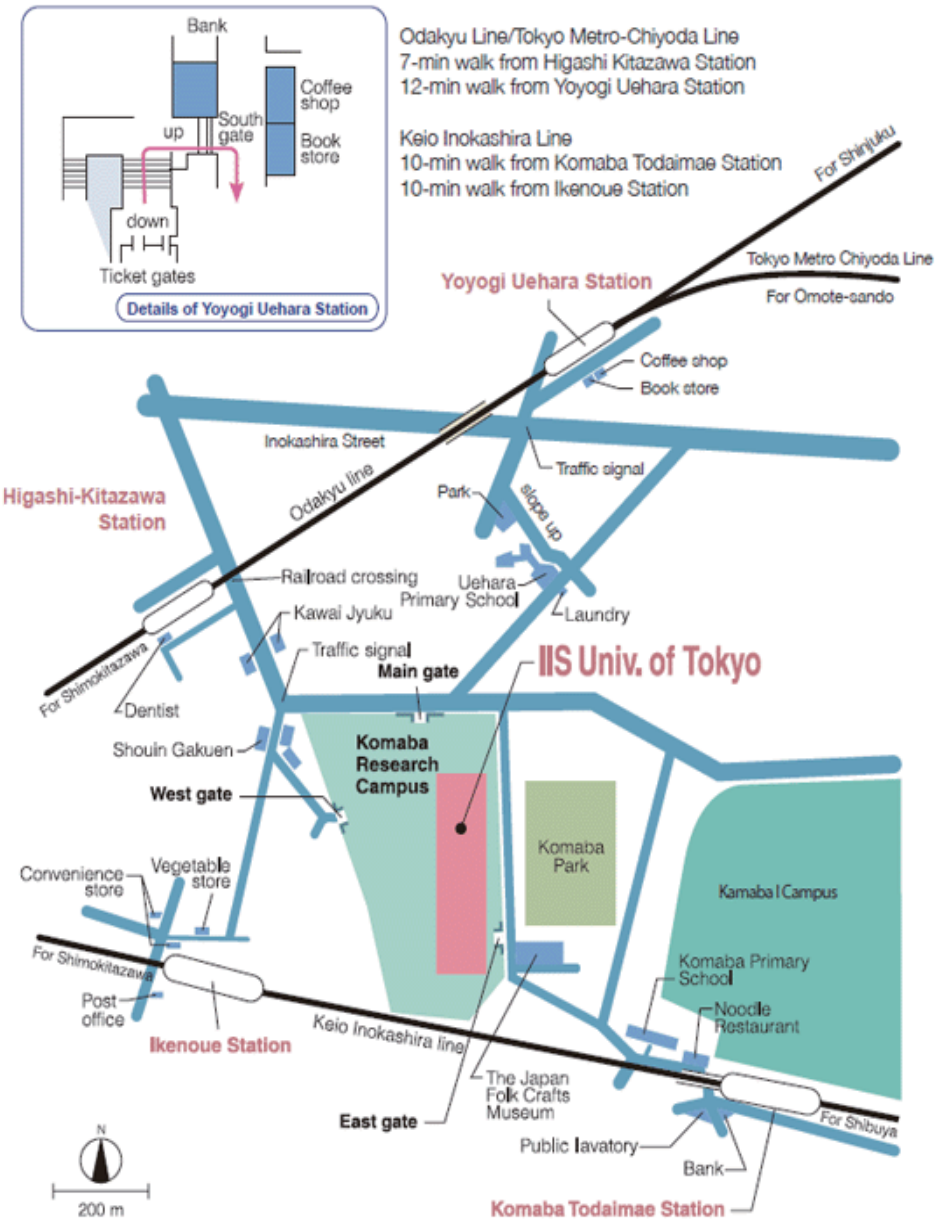
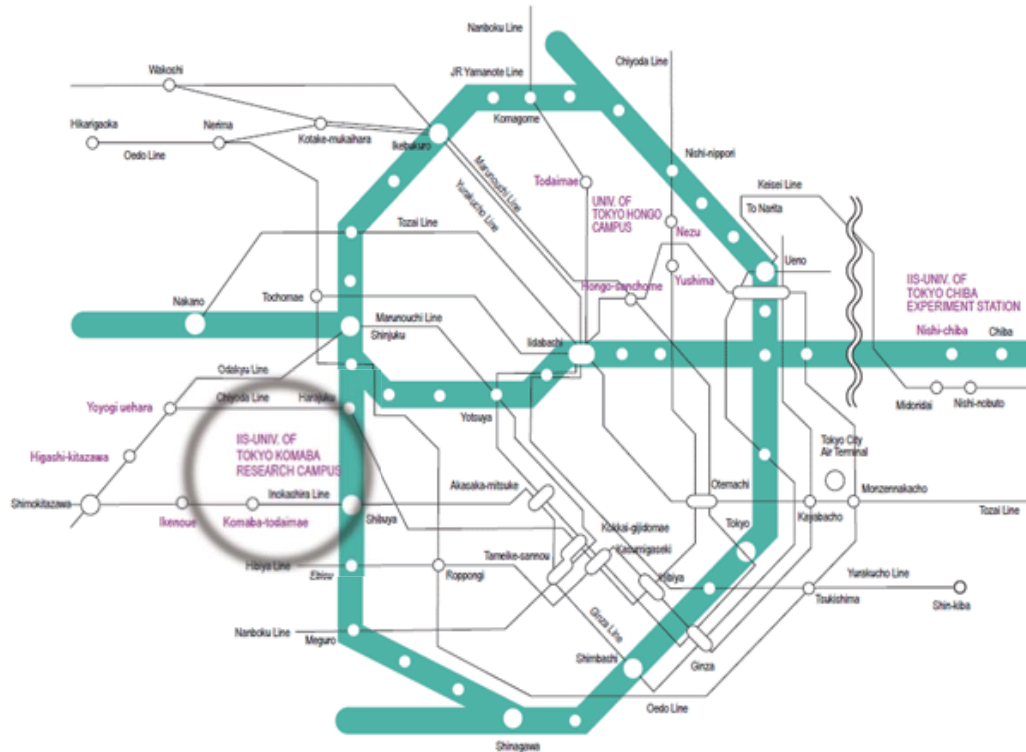


# The University of Tokyo (Hongo Campus) Access Map



- 15 min walk from Hongo-sanchohome Station (Subway Marunouchi Line or Subway Oedo Line).
- 10 min walk from Nezu Station (Subway Chiyoda Line)
- 5 min walk from Todaimae Station (Subway Namboku Line)
- 10 min taxi (¥1200) from Ueno Station. (JR Line or Keisei Line)
- 10 min taxi (¥1300) from Ochanomizu Station (JR Line)

# The University of Tokyo (Komaba Research Campus) Access Map



Tokyo subway information

<http://www.tokyo-metro.jp/e/index.html>

Tokyo subway map

[http://www.tokyo-metro.jp/rosen/rosenzu/pdf/rosen\\_eng.pdf](http://www.tokyo-metro.jp/rosen/rosenzu/pdf/rosen_eng.pdf)

For detailed information

[http://www.iis.u-tokyo.ac.jp/access\\_e/access\\_e.html](http://www.iis.u-tokyo.ac.jp/access_e/access_e.html)